

THE 2020  
**CT5**

---

A CLOSER **LOOK**



*Cadillac*



# DESIGN THAT IS DRIVEN BY THE FUTURE



OPTIONAL FEATURES SHOWN THROUGHOUT

## PERFORMANCE STANCE

---

Corners carved. The bold stance of the CT5 helps you feel firmly planted on the road.



## SIGNATURE LIGHTING

---

Always iconic, the signature LED headlamps continue to light the way.



## ALLOY WHEELS

---

Optimally designed, the alloy wheels harmonize form and function, aesthetics and engineering.



THOUGHTFUL DESIGN.  
PREMIUM EXECUTION.

Expressively styled and boldly designed, each model is uniquely characterized to be an extension of you.



## THOUGHTFUL DESIGN

---

There's no devil in these details. Only a thoughtful console layout designed to keep your focus on the road.



## RIDE COMFORT

---

No matter what speed you're going, feel secure in seats designed from the road up.



## PREMIUM MATERIALS

---

Delightfully handcrafted with premium materials, every detail has been thoughtfully obsessed over—for you.



# RESPONSIVE POWER, EFFICIENTLY DELIVERED

CT5 delivers enthusiasts the refined ride and advanced technology they expect from Cadillac. At the center of it all are the elegant 2.0L Twin-Scroll Turbo engine and the available 3.0L Twin Turbo V6 engine. Both make CT5 indisputably fun to drive.



## TWO POWERFUL ENGINE CHOICES

---

A powerful 2.0L Twin-Scroll Turbo engine is standard on Luxury, Premium Luxury and Sport trims. For even higher performance, a 3.0L Twin Turbo V6 engine is also available, which can produce 335 horsepower and 405 lb-ft of torque on Premium Luxury and 360 horsepower and 405 lb-ft of torque on V-Series.



## 10-SPEED TRANSMISSION

---

Control power with the advanced 10-speed automatic transmission that packs the most speeds in its segment.



## AERODYNAMIC DESIGN

---

The science, engineering and execution of vehicle aerodynamics touch the worlds of design and functionality. Finding the optimal solution among these disciplines is one of the greatest challenges in the automotive sphere.



FEATURING

# CT5-V: BEAUTY AND BEAST





## BREMBO® FRONT BRAKES IN THREE CALIPER COLORS

The three available caliper colors are applied to the front-brake components on the Sport and V-Series, creating a visual one-two punch of appearance and personalization.



## ELECTRONIC LIMITED-SLIP REAR DIFFERENTIAL

The CT5-V includes an electronic Limited-Slip Rear Differential that automatically directs torque to the rear wheel with the most traction for greater control during cornering and spirited maneuvers. This electronic system is extremely precise and optimized across the spectrum of driving conditions.



## QUAD TRAPEZOID EXHAUST TIPS

The quad exhaust tips complement the 3.0L Twin Turbo V6 high-output engine that is standard on V-Series. The exhaust tips are exquisitely crafted and include subtle knurled pattern details inside the tips, exemplifying Cadillac's attention to every detail.



# STATE-OF-THE-ART TECHNOLOGY



## WIRELESS PHONE CHARGING

Power up your devices inside the vehicle wirelessly.<sup>1</sup> There is no clutter—just position a compatible device on the charging pad.



<sup>1</sup>The system wirelessly charges one compatible mobile device. Some phones have built-in wireless charging technology and others require a special adapter/back cover. To check for phone or other device compatibility, see [my.cadillac.com/learn](http://my.cadillac.com/learn) or consult your carrier. <sup>2</sup>Functionality varies by model. Full functionality requires compatible Bluetooth® and smartphone, and USB connectivity for some devices.

## SOUND-OPTIMIZED CABIN

The CT5's interior has been designed and refined to provide a quiet environment that helps enable what the driver desires—from serenity when driving alone to comfortable-volume group conversations.



## ROTARY INFOTAINMENT CONTROLLER

Positioned on the center console, just in front of the armrest, the Rotary Infotainment Controller provides the driver with an intuitive way to interact with the infotainment system.<sup>2</sup>





## SELECTED AVAILABLE SAFETY AND DRIVER-ASSISTANCE FEATURES

---

- AUTOMATIC EMERGENCY BRAKING
- FRONT PEDESTRIAN BRAKING
- HD REAR VISION CAMERA
- INTELLIBEAM AUTO HIGH BEAMS
- SAFETY ALERT SEAT
- REAR SEAT REMINDER<sup>1</sup>
- TEEN DRIVER
- LED HEADLAMPS
- RAINSENSE FRONT WIPERS
- LANE KEEP ASSIST WITH LANE DEPARTURE WARNING
- FOLLOWING DISTANCE INDICATOR
- FORWARD COLLISION ALERT
- FRONT AND REAR PARK ASSIST
- LED CORNERING LAMPS
- ADAPTIVE CRUISE CONTROL - ADVANCED
- ENHANCED AUTOMATIC EMERGENCY BRAKING
- REVERSE AUTOMATIC BRAKING
- LANE CHANGE ALERT WITH SIDE BLIND ZONE ALERT
- AVAILABLE HD SURROUND VISION AND RECORDER
- REAR CROSS TRAFFIC ALERT
- HEAD-UP DISPLAY
- REAR PEDESTRIAN ALERT
- REAR CAMERA MIRROR
- AUTOMATIC SEAT BELT TIGHTENING

Safety or driver-assistance features are no substitute for the driver's responsibility to operate the vehicle in a safe manner. The driver should remain attentive to traffic, surroundings and road conditions at all times. Visibility, weather and road conditions may affect feature performance. Read the vehicle [Owner's Manual](#) for more important feature limitations and information.

<sup>1</sup>Does not detect people or items. Always check rear seat before exiting.

# SPECS

## 3.0L TWIN TURBO V6 ENGINE

### AVAILABLE ON PREMIUM LUXURY

- 335 HP AND 405 LB-FT OF TORQUE
- FWD: EPA-EST 19 MPG CITY/26 MPG HWY
- AWD: EPA-EST 18 MPG CITY/25 MPG HWY

### STANDARD ON V-SERIES

- 360 HP AND 405 LB-FT OF TORQUE
- FWD: EPA-EST 18 MPG CITY/26 MPG HWY
- AWD: EPA-EST 17 MPG CITY/25 MPG HWY

## 2.0L TURBO ENGINE

### STANDARD ON LUXURY, PREMIUM LUXURY AND SPORT

- 237 HP\* AND 258 LB-FT TORQUE\*
- FWD: EPA-EST 23 MPG CITY/32 MPG HWY
- AWD: EPA-EST 21 MPG CITY/31 MPG HWY

\*WITH PREMIUM GASOLINE



# TRIMS

## LUXURY

Luxury features:



- 2.0L Twin-Scroll Turbo engine
- 10-speed automatic transmission
- Rear-Wheel Drive (AWD available)
- 10" diagonal full-color HD touch-screen display and Rotary Infotainment Controller
- Leatherette Seating Surfaces
- Forward Collision Alert<sup>1</sup> and Automatic Emergency Braking<sup>1</sup>

## PREMIUM LUXURY

Includes Luxury features, plus:



- Exclusive Premium Luxury wheels and bright accented grille
- Leather Appointed Seating
- Wireless Phone Charging<sup>2</sup>
- Lane Change Alert with Side Blind Zone Alert<sup>1</sup>
- Available Platinum Package and 3.0L Twin Turbo V6 engine

## SPORT

Includes Premium Luxury features, plus:



- Sport grilles, fascia, rockers and spoiler
- Brembo<sup>®</sup> performance front brakes
- Thick-rim Steering Wheel
- 18-way adjustable front seats, including sport bolsters
- Leatherette Seating Surfaces
- Available Leather Appointed Seating
- Available Platinum Package

## V-SERIES

Includes Sport features, plus:



- 3.0L Twin Turbo high-output V6 engine
- Performance suspension with Magnetic Ride Control
- Electronic Limited-Slip Rear Differential
- Performance Traction Management and Launch Control
- Available Platinum Package

<sup>1</sup>Read the vehicle [Owner's Manual](#) for important feature limitations and information.

<sup>2</sup>The system wirelessly charges one compatible mobile device. Some phones have built-in wireless charging technology and others require a special adapter/back cover. To check for phone or other device compatibility, see [my.cadillac.com/learn](http://my.cadillac.com/learn) or consult your carrier.

# EXTERIOR COLORS

---



SUMMIT WHITE



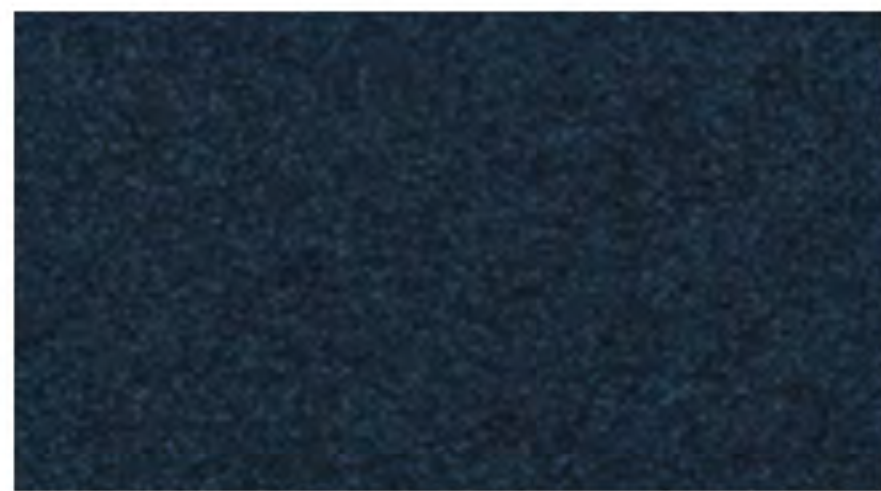
BLACK RAVEN



SATIN STEEL METALLIC<sup>1</sup>



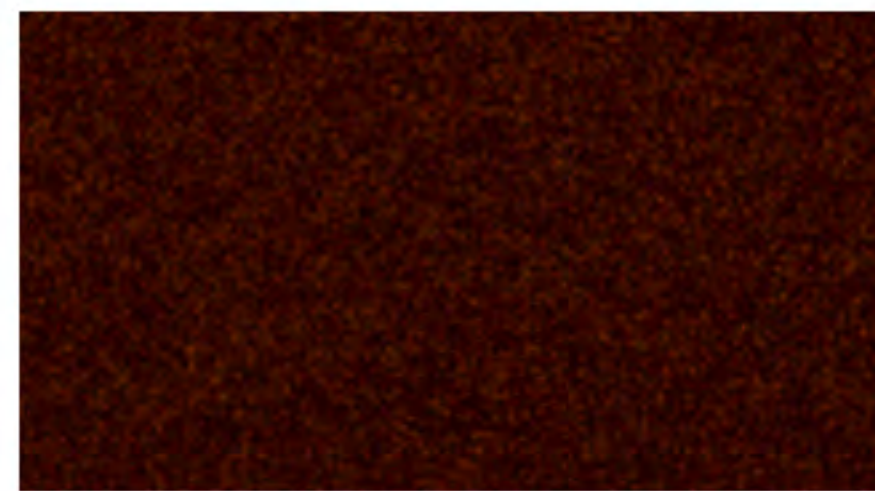
EVERGREEN METALLIC<sup>1</sup>



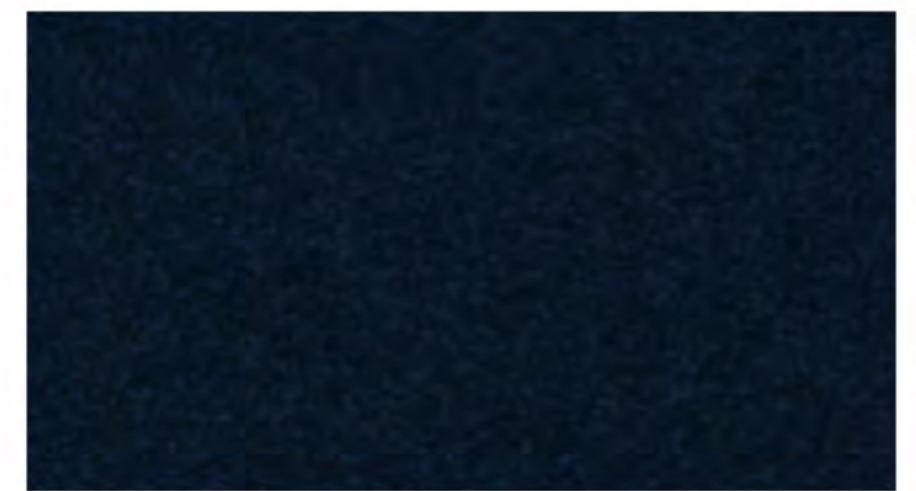
SHADOW METALLIC<sup>1</sup>



WAVE METALLIC<sup>1</sup>



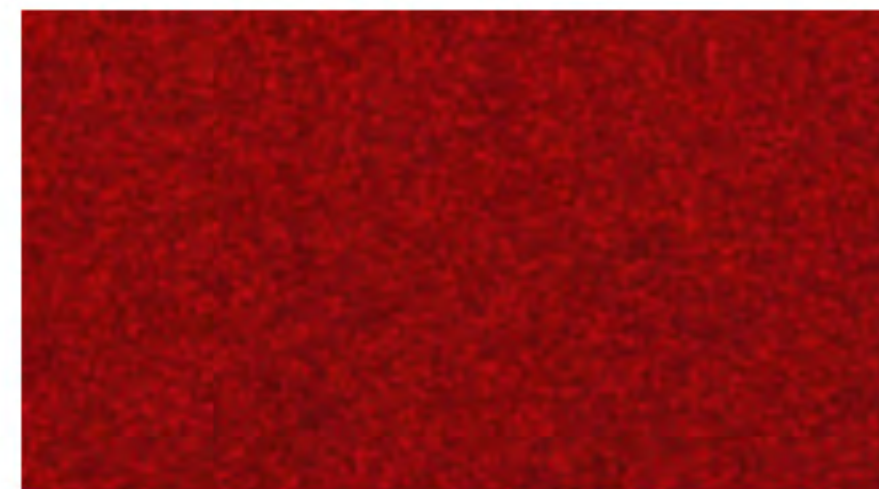
GARNET METALLIC<sup>1,2</sup>



DARK MOON METALLIC<sup>1,2</sup>



CRYSTAL WHITE TRICOAT<sup>1,3</sup>



RED OBSESSION TINTCOAT<sup>1,4</sup>



ROYAL SPICE METALLIC<sup>1,4</sup>



VELOCITY RED<sup>1,4</sup>

# INTERIOR COLORS

---

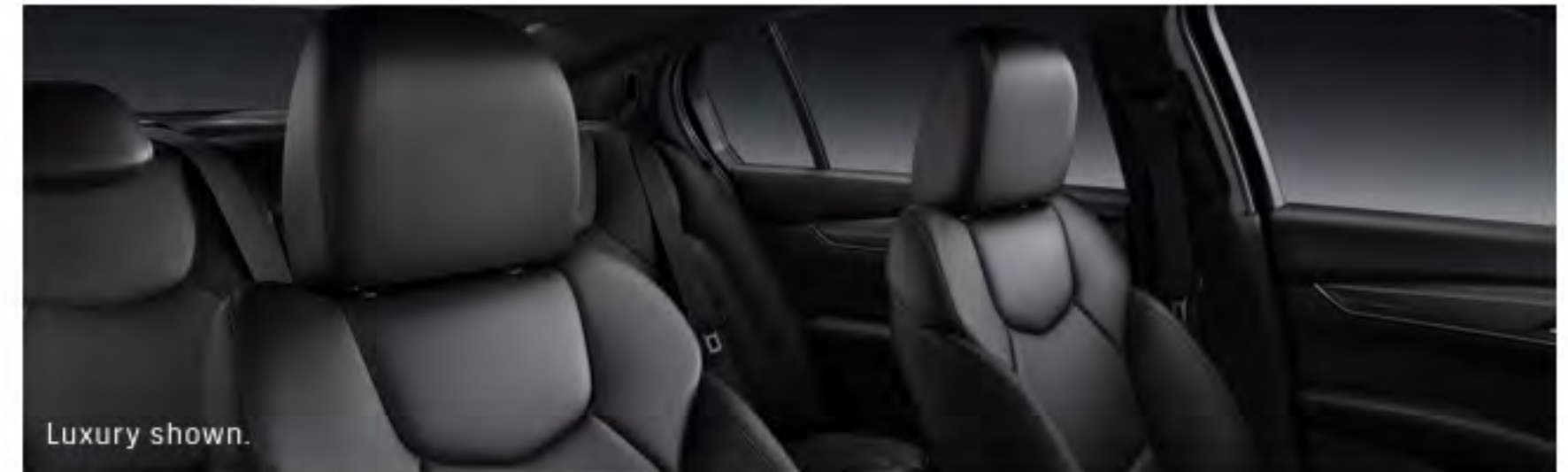


## SAHARA BEIGE WITH JET BLACK ACCENTS

Leatherette Seating Surfaces

---

Standard on Luxury.



## JET BLACK WITH JET BLACK ACCENTS

Leatherette Seating Surfaces

---

Standard on Luxury, Sport and V-Series.



## JET BLACK WITH JET BLACK ACCENTS

Leather Appointed Seating

---

Available on Premium Luxury, Sport and V-Series.



## SEDONA SAUVAGE WITH JET BLACK ACCENTS

Semi-Aniline Leather Appointed Seating

---

Available on Premium Luxury, Sport and V-Series.



# INTERIOR COLORS

---



## MAPLE SUGAR WITH JET BLACK ACCENTS

Leather Appointed Seating

---

Available on Premium Luxury.



## SAHARA BEIGE WITH JET BLACK ACCENTS

Leather Appointed Seating

---

Available on Premium Luxury.



## WHISPER BEIGE WITH JET BLACK ACCENTS

Leather Appointed Seating

---

Available on Sport and V-Series.

# WHEELS



18" Painted alloy with Bright Silver finish

Standard on Luxury.



19" Premium painted alloy with Pearl Nickel finish

Standard on Sport and V-Series.



18" Diamond Cut alloy with Android Gloss pockets

Available on Premium Luxury.



19" Diamond Cut alloy with Midnight Silver pockets

Available on Premium Luxury.



18" Premium painted alloy with Manooagian Silver finish

Standard on Premium Luxury.



19" Premium painted alloy with Satin Graphite finish

Available on Sport and V-Series.



19" Diamond Cut alloy with Android Satin pockets

Available on Sport and V-Series.



20" Polished alloy with Dark Android Gloss pockets

Available on all trims.<sup>1</sup>



20" Painted alloy with Gloss Black finish

Available on all trims.<sup>1</sup>

<sup>1</sup>Dealer-installed accessory wheel. Use only GM-approved tire and wheel combinations. See [cadillac.com/accessories](http://cadillac.com/accessories) for important tire and wheel information, or see your dealer.



THANK YOU FOR YOUR INTEREST IN THE  
**2020 CADILLAC CT5/CT5-V**

## AN IMPORTANT NOTE ABOUT ALTERATIONS AND WARRANTIES

Installations or alterations to the original equipment vehicle (or chassis) as distributed by General Motors are not covered by the General Motors New Vehicle Limited Warranty. The special body company, assembler, equipment installer or upfitter is solely responsible for warranties on the body or equipment and any alterations (or any effect of the alterations) to any of the parts, components, systems or assemblies installed by GM. General Motors is not responsible for the safety or quality of design, features, materials or workmanship of any alterations by such employers.

## ENGINES

Cadillac products are equipped with engines produced by GM Powertrain or other suppliers to GM worldwide. The engines in Cadillac products may also be used in other GM makes and models.

## ASSEMBLY

Cadillac vehicles and their components are assembled or produced by different operating units of General Motors, its subsidiaries or suppliers to GM worldwide. We sometimes find it necessary to produce Cadillac vehicles with different or differently sourced components than originally scheduled. Since some options may be unavailable when your vehicle is assembled, we suggest you verify that your vehicle includes the equipment you ordered and that, if there were changes, they are acceptable to you.

## ONSTAR®

OnStar services require vehicle electrical system (including battery), wireless service and GPS satellite signals to be available and operating for features to function properly. OnStar acts as a link to existing emergency service providers. Subscription Service Agreement required. Call 1.888.4ONSTAR (1.888.466.7827) or visit onstar.com for OnStar Terms and Conditions, Privacy Policy, details and system limitations.

## A NOTE ON CHILD SAFETY

Always use seat belts and the correct child restraint for your child's age and size, even with airbags. Even in vehicles equipped with the Passenger Sensing System, children are safer when properly secured in a rear seat in the appropriate infant, child or booster seat. Never place a rear-facing infant restraint in the front seat of any vehicle equipped with an active frontal airbag. See the Owner's Manual and the child safety seat instructions for more safety information.

## TRAILERING AND OFF-ROAD DRIVING INFORMATION

Please go to cadillac.com and carefully review the vehicle Owner's Manual for important safety information about trailering or off-road driving in your vehicle.

## IMPORTANT WORDS ABOUT THIS CATALOG

We have tried to make this catalog comprehensive and factual. We reserve the right, however, to make changes at any time, without notice, in prices, colors, materials, equipment, specifications, models and availability. Specifications, dimensions, measurements, ratings and other numbers in this catalog and other printed materials provided at the dealership or affixed to vehicles are approximations based on design and engineering drawings, prototypes and laboratory tests. Your vehicle may differ due to variations in manufacture and equipment. Since some information may have been updated since the time of printing, please check with your Cadillac dealer for complete details. Cadillac reserves the right to lengthen or shorten the model year for any product for any reason or to start and end model years at different times. Certain vehicle features may lose their usefulness over time due to obsolescence from technological changes. Unless otherwise noted, all claims based on GM Compact Luxury Car segment and latest available competitive information. Excludes other GM vehicles.

## FLEET ORDERS

Some standard content may be deleted on fleet orders. See dealer for details.

## GMMOBILITY.COM (1.800.323.9935)

GM Mobility offers financial assistance for eligible adaptive equipment to make automotive travel easier for persons with disabilities or special transportation needs. To learn more about special GM Mobility offers, visit gmmobility.com.

## NEW VEHICLE LIMITED WARRANTY

6-YEAR/70,000-MILE TRANSFERABLE POWERTRAIN LIMITED WARRANTY Every 2020 Cadillac CT5 comes with a 6-year/70,000-mile (whichever comes first) transferable Powertrain Limited Warranty. 24/7 Roadside Assistance and Courtesy Transportation are also offered for the duration of the Powertrain Limited Warranty. Please see your Cadillac dealer for details.

## 4-YEAR/50,000-MILE BUMPER-TO-BUMPER LIMITED WARRANTY

Cadillac will warrant each 2020 CT5 from bumper to bumper for 4 years/50,000 miles (whichever comes first; see dealer for details), with no deductible, from the original in service date of the vehicle, for warrantable repairs that are required as a result of defects due to materials and/or workmanship. Cosmetic corrosion resulting from defects is also covered under the Bumper-to-Bumper Limited Warranty. In addition, rust-through corrosion will be covered for 6 years/100,000 miles (whichever comes first). See dealer for details.