

THE 2020
CT4

A CLOSER LOOK



Cadillac



CT4 SPORT



CT4 PREMIUM LUXURY

CHISELED AND AGILE



OPTIONAL FEATURES SHOWN THROUGHOUT

PERFORMANCE FEATURE HIGHLIGHTS

BREMBO® FRONT BRAKES

Wield the performance power of the CT4 with standard Brembo front brakes on the Sport and V-Series. Featuring beautiful four-piston fixed calipers and patented Duralife rotors, these brakes are durable and deliver sure-footed stopping power.



¹EPA-estimated mpg: 23 city/34 hwy RWD; 23 city/32 hwy AWD.

10-SPEED TRANSMISSION

An elegant expression of movement. Experience a seamless journey through the gear-box with our available 10-speed automatic transmission – a nice compliment to the standard 8-speed automatic transmission.



2.0L TWIN-SCROLL TURBO ENGINE

The CT4 comes equipped with a 2.0L Twin-Scroll Turbo engine for a nimble and fuel-efficient¹ drive. All 258 lb-ft of peak torque is available at just 1500 rpm with premium gasoline, meaning that calling CT4 “responsive” is an understatement.



A NEW BENCHMARK FOR EXPRESSIVE DESIGN



VERTICAL SIGNATURE LIGHTING

Always iconic, the LED Signature Lighting and headlamps continue to light the way.



DISTINCTIVE DESIGN THEMES

Delightfully handcrafted with premium materials, every detail has been thoughtfully obsessed over—for you.



VEHICLE ARCHITECTURE

Built for those who want to elevate every drive. The CT4 was designed on a global RWD (AWD available) vehicle architecture that delivers nimble, athletic performance, making it a true driver's car.



INTERIOR LUXURIES AWAIT



DISTINCT INTERIORS

Make your cabin match your personality with eight distinct interior color and trim environments to choose from. High-tech, high-touch materials make the CT4 cockpit a respite from the ordinary.



¹Functionality varies by model. Full functionality requires compatible Bluetooth® and smartphone, and USB connectivity for some devices.

INTERIOR FEATURE HIGHLIGHTS

BOSE® PREMIUM SURROUND SOUND SYSTEM

Standard Active Noise Cancellation helps create a clean and quiet sound canvas for the available Bose Premium Surround Sound System's crisp, vibrant audio.



INTUITIVE CONTROLS

The CT4 offers multiple ways to interact with the latest Cadillac infotainment System¹ including an 8" diagonal HD color touch-screen display, dual-mic cloud-based Natural Voice Recognition, steering-wheel controls, hard buttons and knobs and an available center console rotary controller. Whatever your preference, CT4 intuitively conforms to you.



FEATURING

CT4-V: POWER UP

Impressively agile and powerfully nimble, the CT4-V can make corners feel like straightaways.



2.7L DUAL-VOLUTE TURBOCHARGED ENGINE

Rediscover the thrill of driving with the available 2.7L Turbocharged engine. Patented Cadillac technologies provide efficiency and refined, responsive performance whenever you need it.



MAGNETIC RIDE CONTROL

No matter the driver. No matter the road. The Magnetic Ride Control adaptive suspension delivers consummate performance and control for any road conditions.



EXCELLENT VEHICLE WEIGHT DISTRIBUTION

Always stay poised. Excellent front-to-rear weight distribution lets you take command of the road providing balance and feel.



STATE-OF-THE-ART TECHNOLOGY



ADVANCED CADILLAC USER EXPERIENCE

With the Cadillac user experience,¹ you've never had more power at the tip of your fingers and at the sound of your voice. The all-new infotainment system features an 8" diagonal HD color touch-screen and available embedded navigation,² with readily accessible smartphone and app functionality.



WIRELESS PHONE CHARGING

Stay connected on the go with available wireless phone charging,³ so you'll always be charged up for the road ahead.



NATURAL VOICE RECOGNITION

Natural Voice Recognition allows you to speak commands to play music, make phone calls or enter navigation destinations (if equipped) while keeping your eyes on the road and both hands on the steering wheel.



¹Functionality varies by model. Full functionality requires compatible Bluetooth® and smartphone, and USB connectivity for some devices. ²Map coverage available in the United States, Puerto Rico and Canada. ³The system wirelessly charges one compatible mobile device. Some phones have built-in wireless charging technology and others require a special adapter/back cover. To check for phone or other device compatibility, see my.cadillac.com/learn or consult your carrier.



SELECTED AVAILABLE SAFETY AND DRIVER-ASSISTANCE FEATURES

- HD REAR VISION CAMERA
- REAR SEAT REMINDER¹
- TEEN DRIVER
- SAFETY ALERT SEAT
- LED REFLECTIVE WINDSHIELD COLLISION ALERT
- REAR PARK ASSIST
- FRONT AND REAR PARK ASSIST
- ENHANCED AUTOMATIC EMERGENCY BRAKING
- LANE CHANGE ALERT WITH SIDE BLIND ZONE ALERT
- REAR CROSS TRAFFIC ALERT
- FORWARD COLLISION ALERT
- REVERSE AUTOMATIC BRAKING
- FRONT PEDESTRIAN BRAKING
- ADAPTIVE CRUISE CONTROL-ADVANCED

Safety or driver-assistance features are no substitute for the driver's responsibility to operate the vehicle in a safe manner. The driver should remain attentive to traffic, surroundings and road conditions at all times. Visibility, weather and road conditions may affect feature performance. Read the vehicle [Owner's Manual](#) for more important feature limitations and information.

¹Does not detect people or items. Always check rear seat before exiting.

SPECS

2.7L DUAL-VOLUTE TURBOCHARGED ENGINE

AVAILABLE ON PREMIUM LUXURY

- 310 HP AND 350 LB-FT OF TORQUE
- RWD: EPA-EST 20 MPG CITY/30 MPG HWY
- AWD: EPA-EST 20 MPG CITY/28 MPG HWY

STANDARD ON V-SERIES

- 325 HP AND 380 LB-FT OF TORQUE
 - RWD: EPA-EST 20 MPG CITY/ 29 MPG HWY
 - AWD: EPA-EST 20 MPG CITY/ 28 MPG HWY
-

2.0L TWIN-SCROLL TURBOCHARGED ENGINE

STANDARD ON LUXURY, PREMIUM LUXURY AND SPORT

- 237 HP* AND 258 LB-FT OF TORQUE*
- RWD: EPA-EST 23 MPG CITY/34 MPG HWY
- AWD: EPA-EST 23 MPG CITY/ 32 MPG HWY

*WITH PREMIUM GASOLINE



TRIMS

LUXURY

Luxury features:



- 2.0L Twin-Scroll Turbocharged engine with dual exhaust tips
- 8-speed automatic transmission
- Rear-Wheel Drive (AWD available)
- 8" diagonal full-color HD touch-screen display
- LED headlamps, taillamps and interior lighting
- Leatherette Seating Surfaces

PREMIUM LUXURY

Includes Luxury features, plus:



- Exclusive Premium Luxury wheels
- Leather Appointed Seating
- Automatic Emergency Braking¹
- Forward Collision Alert¹
- Front Pedestrian Braking¹
- Safety Alert Seat¹
- LED Reflective Windshield Collision Alert¹

SPORT

Includes Premium Luxury features, plus:



- Sport grille, fascia, rockers, taillamps and spoiler
- Brembo[®] performance front brakes
- Thick-rim steering wheel with dimpled grips and Magnesium Paddle Shifters
- 18-way adjustable front seats including sport bolsters
- Alloy pedals
- Leatherette Seating Surfaces

V-SERIES

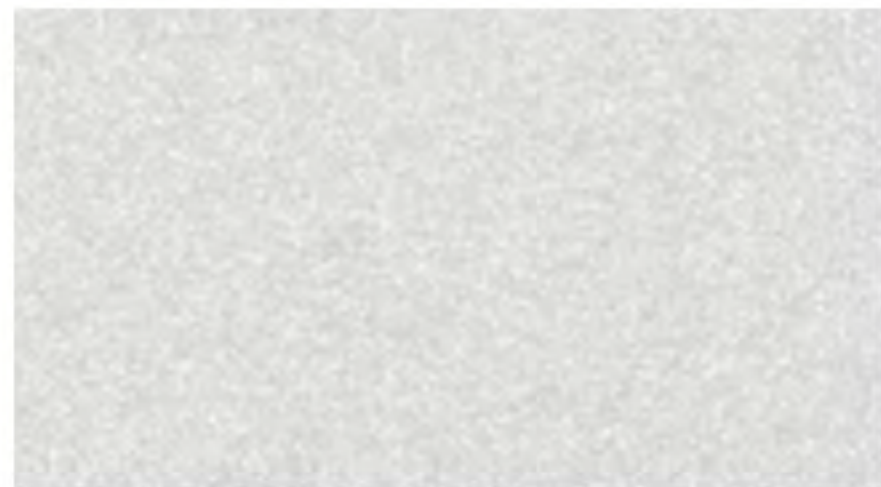
Includes Sport features, plus:



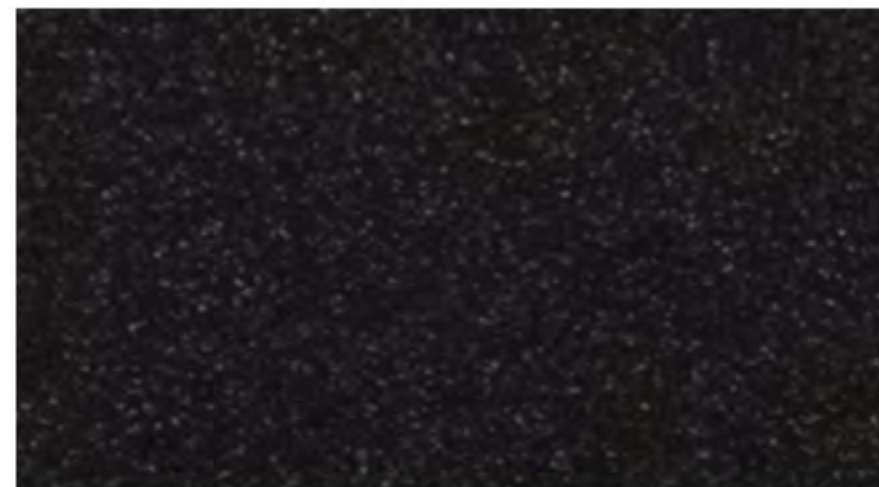
- 2.7L Dual-Volute Turbocharged engine with quad exhaust tips
- 10-speed automatic transmission
- Performance suspension with Magnetic Ride Control
- Electronic Limited-Slip Rear Differential
- Performance Traction Management and Launch Control

¹Read the vehicle Owner's Manual for important feature limitations and information.

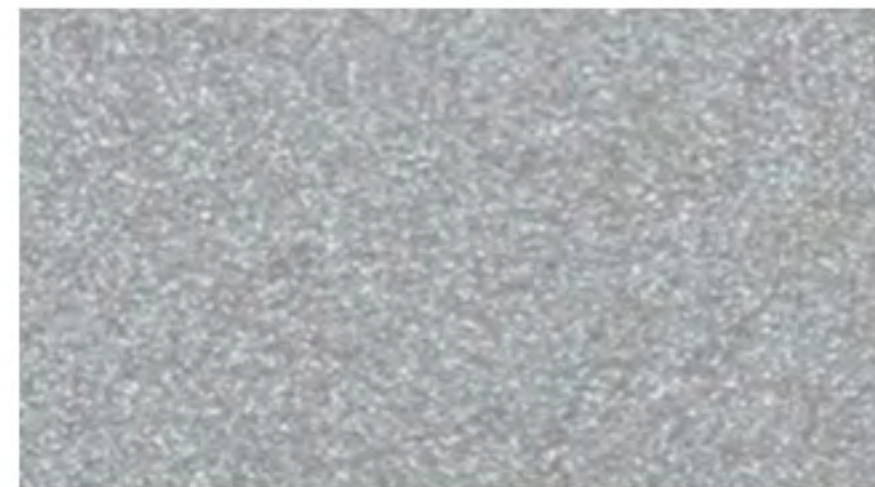
EXTERIOR COLORS



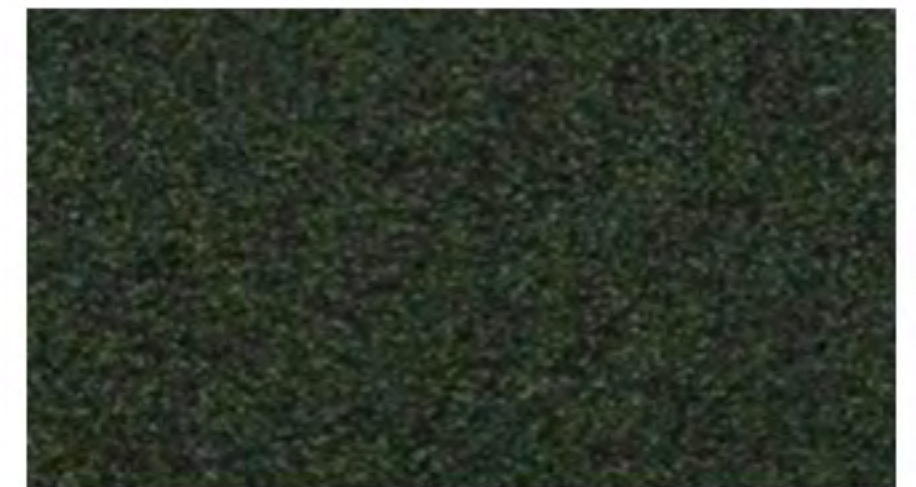
SUMMIT WHITE



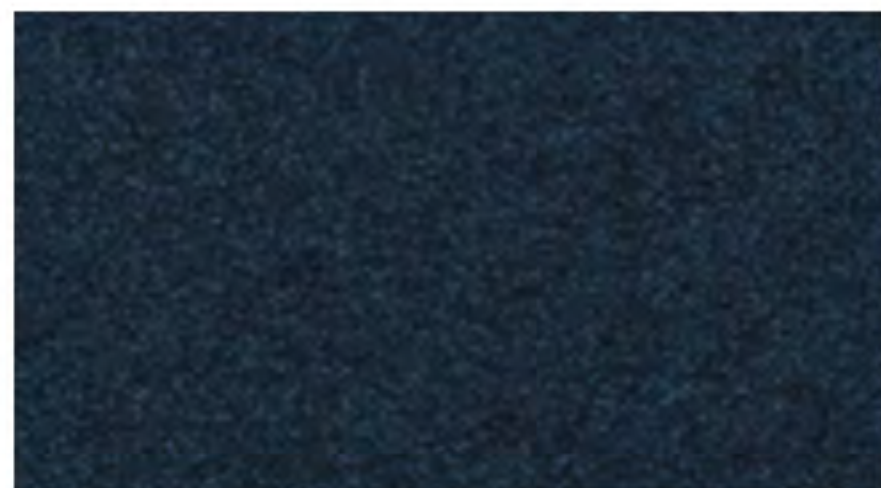
BLACK RAVEN



SATIN STEEL METALLIC¹



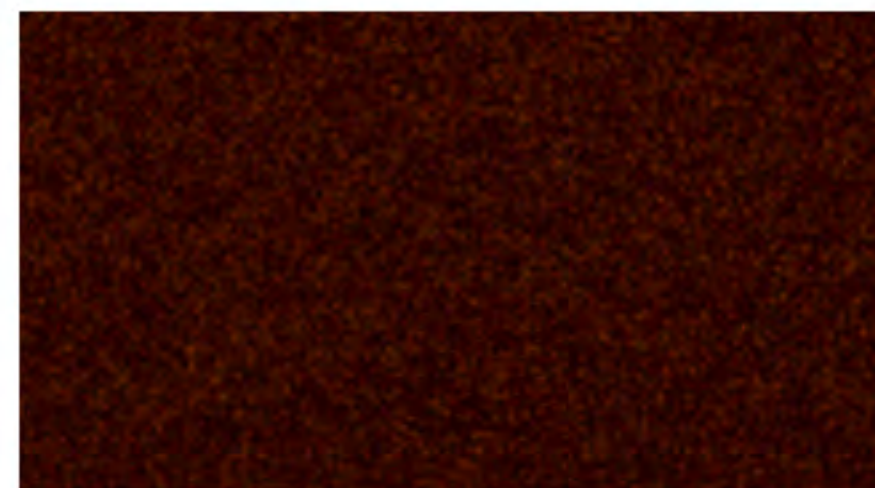
EVERGREEN METALLIC¹



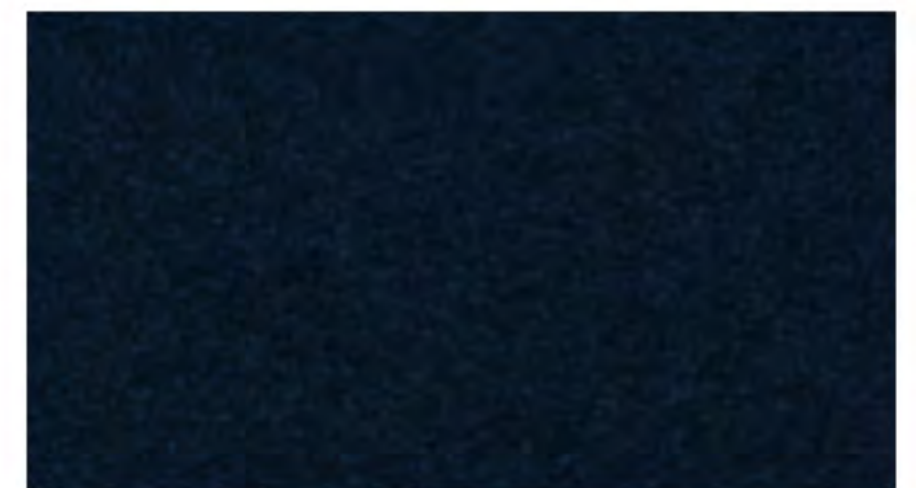
SHADOW METALLIC¹



WAVE METALLIC¹



GARNET METALLIC^{1,2}



DARK MOON METALLIC^{1,2}



CRYSTAL WHITE TRICOAT^{1,3}



RED OBSESSION TINTCOAT¹



ROYAL SPICE METALLIC^{1,4}



VELOCITY RED^{1,4}

INTERIOR COLORS



JET BLACK WITH JET BLACK ACCENTS

Leatherette Seating Surfaces

Standard on Luxury.



WHISPER BEIGE WITH JET BLACK ACCENTS

Leatherette Seating Surfaces

Standard on Luxury.



JET BLACK WITH JET BLACK ACCENTS

Leather Appointed Seating with mini-perforated inserts

Standard on Premium Luxury.



CINNAMON WITH JET BLACK ACCENTS

Leather Appointed Seating with mini-perforated inserts

Available on Premium Luxury.

INTERIOR COLORS



WHISPER BEIGE WITH JET BLACK ACCENTS

Leather Appointed Seating with mini-perforated inserts

Available on Premium Luxury.



JET BLACK WITH JET BLACK ACCENTS

Leatherette Seating Surfaces

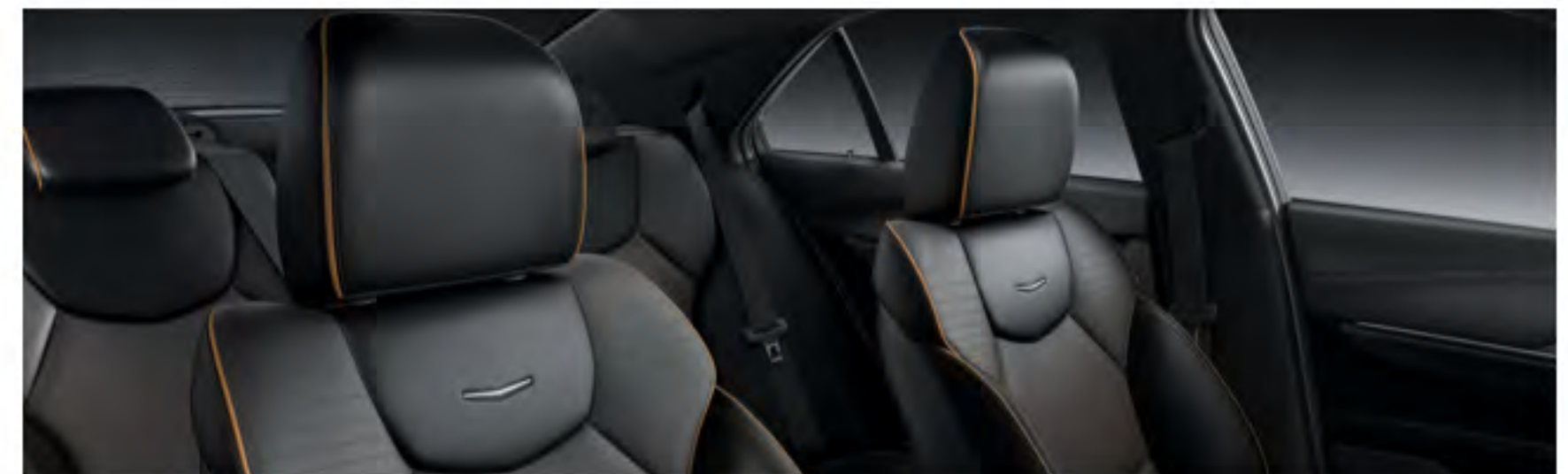
Standard on Sport and V-Series.



SANGRIA WITH JET BLACK ACCENTS

Leather Appointed Seating with mini-perforated inserts

Available on Sport and V-Series.



JET BLACK WITH JET BLACK ACCENTS

Leather Appointed Seating with mini-perforated inserts

Available on Sport and V-Series.

WHEELS



17" Bright Silver alloy

Standard on Luxury



18" Premium painted alloy with Sterling Silver finish

Standard on Premium Luxury.



18" Premium painted alloy with Pearl Nickel finish

Standard on Sport and V-Series.



18" Diamond-Cut alloy with Midnight Silver pockets

Available on Premium Luxury.



18" Diamond-Cut alloy with Medium Android Satin pockets

Available on Sport and V-Series.



18" Premium painted alloy with Satin Graphite finish

Available on Sport and V-Series.



19" Polished alloy with Dark Android gloss pockets

Available on all trims.¹



19" Painted alloy with Gloss-Black finish

Available on all trims.¹

¹Dealer-installed accessory. Use only GM-approved tire and wheel combinations. See cadillac.com/accessories for important tire and wheel information, or see your dealer.



THANK YOU FOR YOUR INTEREST IN THE
2020 CADILLAC CT4/CT4-V

AN IMPORTANT NOTE ABOUT ALTERATIONS AND WARRANTIES

Installations or alterations to the original equipment vehicle (or chassis) as distributed by General Motors are not covered by the General Motors New Vehicle Limited Warranty. The special body company, assembler, equipment installer or upfitter is solely responsible for warranties on the body or equipment and any alterations (or any effect of the alterations) to any of the parts, components, systems or assemblies installed by GM. General Motors is not responsible for the safety or quality of design, features, materials or workmanship of any alterations by such employers.

ENGINES

Cadillac products are equipped with engines produced by GM Powertrain or other suppliers to GM worldwide. The engines in Cadillac products may also be used in other GM makes and models.

ASSEMBLY

Cadillac vehicles and their components are assembled or produced by different operating units of General Motors, its subsidiaries or suppliers to GM worldwide. We sometimes find it necessary to produce Cadillac vehicles with different or differently sourced components than originally scheduled. Since some options may be unavailable when your vehicle is assembled, we suggest you verify that your vehicle includes the equipment you ordered and that, if there were changes, they are acceptable to you.

ONSTAR®

OnStar services require vehicle electrical system (including battery), wireless service and GPS satellite signals to be available and operating for features to function properly. OnStar acts as a link to existing emergency service providers. Subscription Service Agreement required. Call 1.888.4ONSTAR (1.888.466.7827) or visit onstar.com for OnStar Terms and Conditions, Privacy Policy, details and system limitations.

A NOTE ON CHILD SAFETY

Always use seat belts and the correct child restraint for your child's age and size, even with airbags. Even in vehicles equipped with the Passenger Sensing System, children are safer when properly secured in a rear seat in the appropriate infant, child or booster seat. Never place a rear-facing infant restraint in the front seat of any vehicle equipped with an active frontal airbag. See the Owner's Manual and the child safety seat instructions for more safety information.

TRAILERING AND OFF-ROAD DRIVING INFORMATION

Please go to cadillac.com and carefully review the vehicle Owner's Manual for important safety information about trailering or off-road driving in your vehicle.

IMPORTANT WORDS ABOUT THIS CATALOG

We have tried to make this catalog comprehensive and factual. We reserve the right, however, to make changes at any time, without notice, in prices, colors, materials, equipment, specifications, models and availability. Specifications, dimensions, measurements, ratings and other numbers in this catalog and other printed materials provided at the dealership or affixed to vehicles are approximations based on design and engineering drawings, prototypes and laboratory tests. Your vehicle may differ due to variations in manufacture and equipment. Since some information may have been updated since the time of printing, please check with your Cadillac dealer for complete details. Cadillac reserves the right to lengthen or shorten the model year for any product for any reason or to start and end model years at different times. Certain vehicle features may lose their usefulness over time due to obsolescence from technological changes. Unless otherwise noted, all claims based on GM Compact Luxury Car segment and latest available competitive information. Excludes other GM vehicles.

FLEET ORDERS

Some standard content may be deleted on fleet orders. See dealer for details.

GMMOBILITY.COM (1.800.323.9935)

GM Mobility offers financial assistance for eligible adaptive equipment to make automotive travel easier for persons with disabilities or special transportation needs. To learn more about special GM Mobility offers, visit gmmobility.com.

NEW VEHICLE LIMITED WARRANTY

6-YEAR/70,000-MILE TRANSFERABLE POWERTRAIN LIMITED WARRANTY. Every 2020 Cadillac CT4 comes with a 6-year/70,000-mile (whichever comes first) transferable Powertrain Limited Warranty. 24/7 Roadside Assistance and Courtesy Transportation are also offered for the duration of the Powertrain Limited Warranty. Please see your Cadillac dealer for details.

4-YEAR/50,000-MILE BUMPER-TO-BUMPER LIMITED WARRANTY

Cadillac will warrant each 2020 CT4 from bumper to bumper for 4 years/50,000 miles (whichever comes first; see dealer for details), with no deductible, from the original in service date of the vehicle, for warrantable repairs that are required as a result of defects due to materials and/or workmanship. Cosmetic corrosion resulting from defects is also covered under the Bumper-to-Bumper Limited Warranty. In addition, rust-through corrosion will be covered for 6 years/100,000 miles (whichever comes first). See dealer for details.